

## **Q:** How Can We Build the Church of the Future?

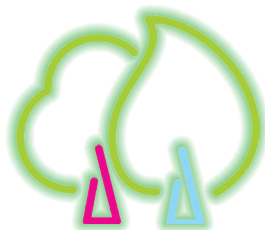


**A:** By growing our positive impact!  
**When you give generously to OCWM and Friends of the Conference, you expand our ministry for years to come!**

**Our challenge:** Tipping the world toward the enduring good, just as Christ did. When we choose to bring our talents and gifts to the table, we create hope-filled, enduring, positive change!

**We literally couldn't do it without you.** About 68% of RMC funding comes from you—our churches. The vast majority of these funds are then put toward local church vitality, youth & adult programming, and mission outreach.

# 2019 Interpretive Ministry Plan



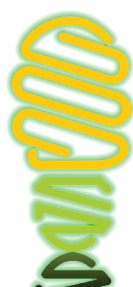
**FAITH DEVELOPMENT: 37%**

People aren't just churched on Sunday mornings; their connection to Spirit is also nurtured outside church walls. Our commitment to Faith Development includes outdoor camps for children, youth, and adults; training for clergy and lay-leaders; and events that foster vital ministries & connection.



**MINISTRY DEVELOPMENT: 34%**

This forward-facing work focuses on the health and vitality of our churches. It includes search & call, crisis response, strategic planning, and communication platforms and practices.



**BUILDING EXP: 4%**

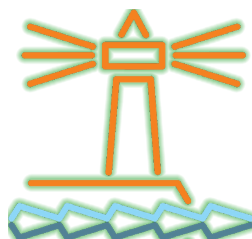
Along with providing a meeting place and workspace for Conference business, our building allows us to host affiliated nonprofits (Family Promise, the Colorado Council of Churches) for a reasonable rent, multiplying the return on your generous investments.

2019 "IN SPIRIT" BUDGET	
<b>SOURCES:</b>	
OCWM	\$390,000
FRIENDS OF THE CONF.	\$30,000
PER CAPITA	\$99,000
FAITH DEVELOPMENT	\$126,895
ENDOWMENT	\$25,000
RENT & MISC.	\$24,500
21ST CENTURY LEADERSHIP	\$65,805
<b>TOTAL:</b>	<b>\$761,200</b>
<b>USES:</b>	
FAITH DEVELOPMENT	\$277,838
MINISTRY DEVELOPMENT	\$258,052
UCC COVENANT	\$153,267
MISSION OUTREACH	\$39,530
BUILDING EXPENSES	\$32,513
<b>TOTAL:</b>	<b>\$761,200</b>



**UCC COVENANT: 20%**

These funds reach the country and world, supporting national and international ministries, UCC seminaries producing pastors of the highest caliber, and collaborative ministries across several denominations.



**MISSION OUTREACH: 5%**

Our Mission Outreach provides support and dollars to partner affiliates such as La Foret and Archway Housing. In 2017, we took it a step further by implementing our "In the Mud" grants, which are given directly to churches to amplify their mission outreach. These grants have already expanded the positive influence of our Conference and the health and vitality of our churches.